

# One Machine, One Operator. Multiple Applications

# Application 1: Demolition Front



# Application 2: Long Reach Front





# Application 3: Excavation Front



# Application 4: Standard Excavation Front



# Contactors' Pain Points

---

- Typical city and urban job sites are tight on space, unable to accommodate multiple machines.
- Limited machines working on multiple applications with compromised efficiency.
- Tight budget for multiple machines.
- High running cost of multiple machines.
- High logistic cost for transporting multiple machines.
- Limited pool of skill operators.

# Ideal Machine Size

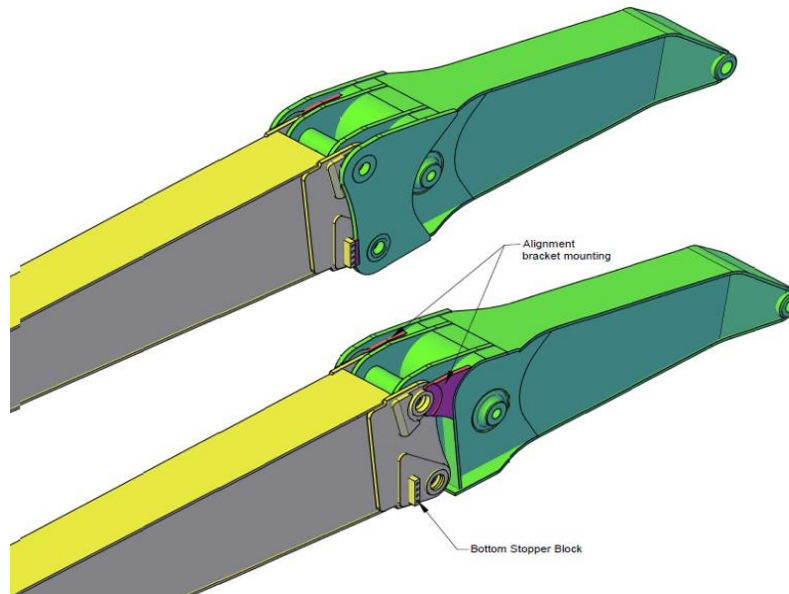
---

- 13 - 20-ton class excavators are most ideal and commonly seen in city and urban sites.
- Easy to transport without needing special permit or escort.
- If you are unsure where to begin, we have a starter-kit. Users can progressively add-on when needs arise.
- Or, go for fully loaded package and be more competitive in tender biddings.



# Benefits

- One machine, one operator for multiple applications without compromised efficiency.
- Higher Return-On-Investment (ROI) per machine.
- Switching between different fronts can be accomplished in minutes with EIK's unique hydraulic pin-on system.
- Achieve more with less manpower.
- Higher rental margin.





# Target Customers

---

- Rental House.
- Machine fleet owners.
- Contractors specialise in city and urban jobs.

# Starter Kit

Long Reach  
+  
Standard Excavation

# Starter Kit

---

- If you are unsure where to begin, we have a starter-kit. Users can progressively add-on when needs arise.
- Or, go for fully loaded package and be more competitive in tender biddings.

# Long Reach Front (starter kit)

## Scope of Supply:

- 1x base boom with hydraulic operated pins.
- 1x front half boom.
- 1x long arm.
- 1x set of hydraulic line for arm cylinder.
- 1x set of hydraulic line for bucket cylinder.
- 1x OEM grade arm cylinder.
- 1x OEM grade bucket cylinder.
- 1x linkage set.
- 1x bucket.

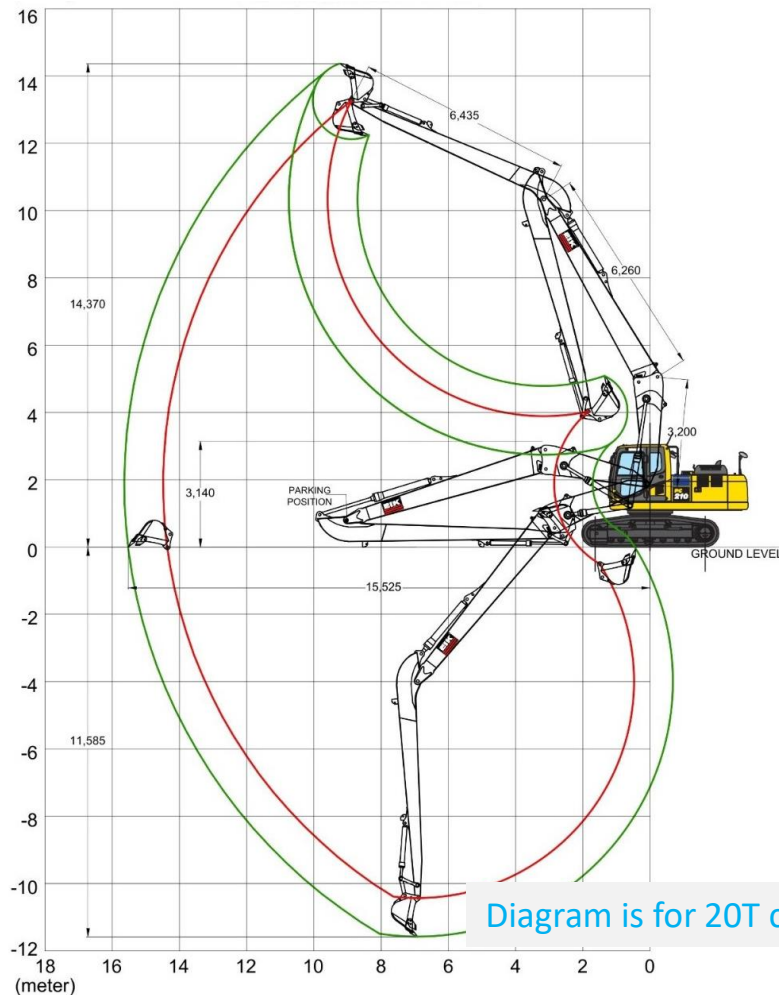


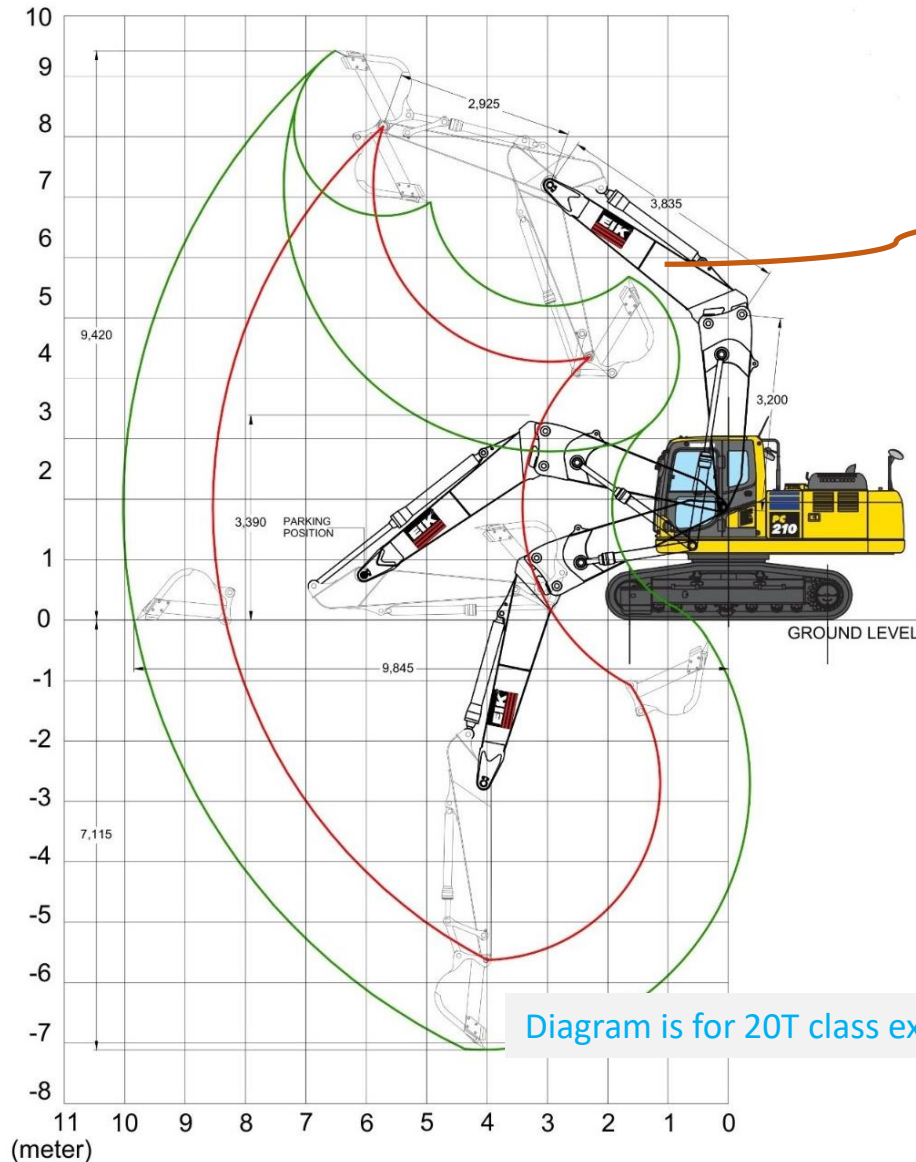
Diagram is for 20T class excavator

## Options:

- Auxiliary lines for attachment
- Hoses at modular joint



# Standard Front (starter Kit)



## Scope of Supply

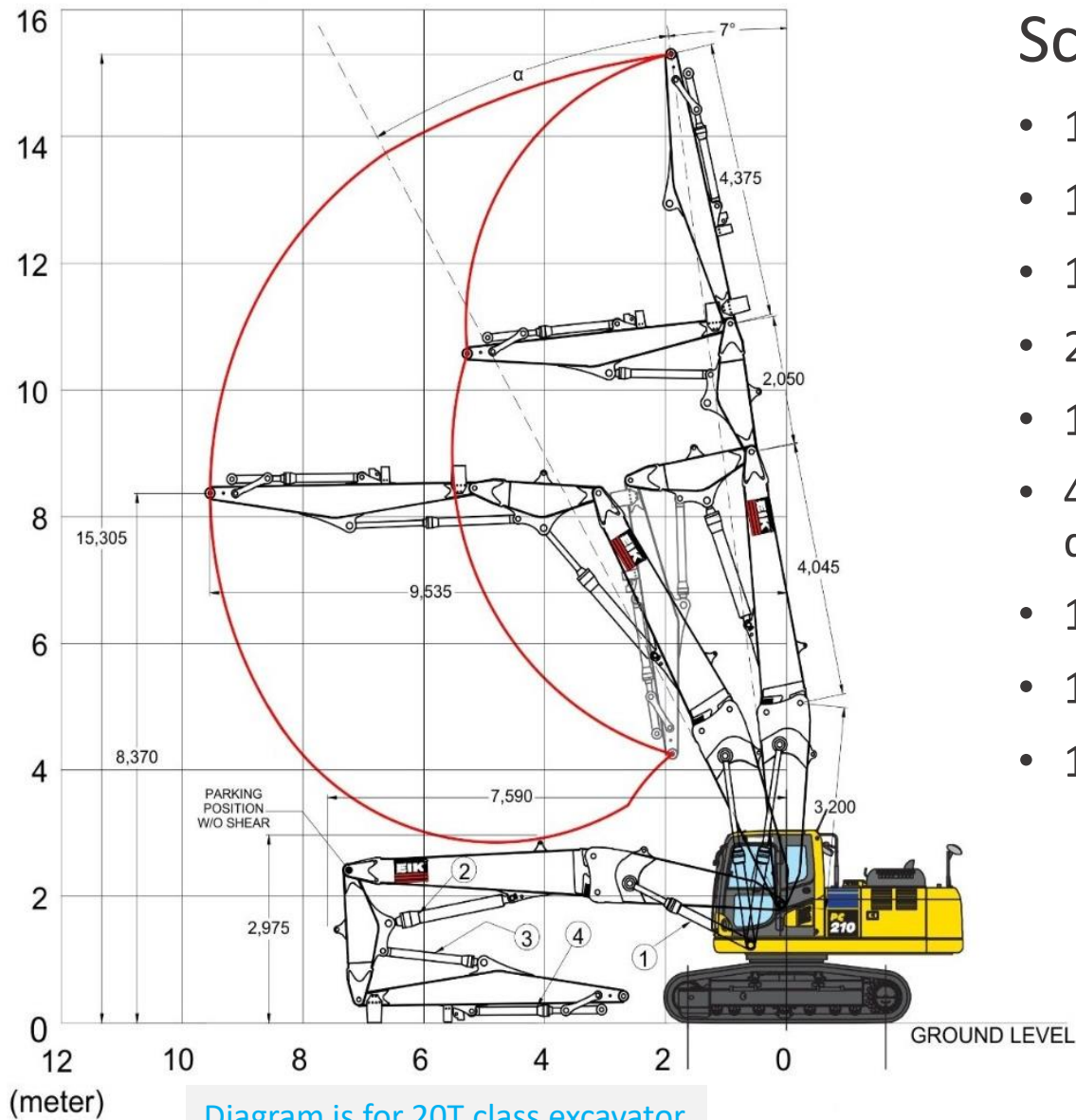
- 1x front half boom.
- Short boom connect to standard arm with bucket

## Options:

- Auxiliary lines for attachment

Diagram is for 20T class excavator

# Demolition Front



## Scope of Supply

- 1x front half boom.
- 1x mid section.
- 1x 3rd section arm.
- 2x set of hydraulic line for arm cylinders.
- 1x set of hydraulic line for bucket cylinder.
- 4+1 auxiliary lines for attachment and drain.
- 1x OEM grade arm cylinder.
- 1x OEM grade bucket cylinder.
- 1x linkage set.

## Options:

- Hoses at modular joint

# Less is More

---

- Less machinery, More productivity.
- Less overhead, More competitive.
- Less competitions, More Advantage.
- Less cost, More Profit.

