

## PILOT TENDER / SURVEY VESSEL (2 SISTERS)

*Former Dutch Pilots Association tender vessel, recently completely checked up and in great condition. Vessel fully ready for operations. Can be delivered under RINA class against additional costs. Vessel's running hours (approx. 12.500 since new) and low consumption figures ensure lean performance. Large lot of spare parts available. Fitted with Hadrian rail, air-conditioned.*

General	
Builder	
Built	1980, the Netherlands
Classification	Register Holland (can be delivered under RINA against additional costs)
Notation	30 nm
Hull material	Polyester (inspected for osmosis 2022, refitted and in perfect shape)
Dimensions	
LOA	23,37 m.
Beam	5.19 m.
Draft	1.10 m.
Displacement	42 tons
Capacities	
Cargo capacity	5 tons

Machinery	
Main engines	2x GM Detroit 12V-71
Output	2x 265 kW / 360 hp
Generators	1x Kohler silent pack
Output	11.5 kW / 50 Hz / 3-phase / 230/400V
Propulsion	2x fixed-pitch propellers

Performance	
Speed	17 kn. max
Consumption max	120 l/hr
Deck equipment	
MOB device	present
Tank capacities	
Fuel oil	1.7 m <sup>3</sup>
Nav/Com	
GMDSS	A1 + Register Holland 30 nm
	2x VHF, radar. GPS, Autopilot, AIS, gyro compass
Accommodation	
Seats	6 (up to 12 possible), air-conditioned and heated
Other	Spacious mess room Small kitchenette



### Disclaimer

All details of the vessels or equipment offered by FPS Marine is done in good faith but is not guaranteed. We do not warrant the accuracy of the information

nor warrant the condition of the vessel or equipment.

Any buyer should instruct as suitably qualified person or organisation to inspect or investigate such details to the buyer's satisfaction.

All equipment is offered subject to availability, price change, or withdrawal from the market without notice.

**PILOT TENDER / SURVEY VESSEL (2 SISTERS)**



All details of the vessels or equipment offered by FPS Marine is done in good faith but is not guaranteed. We do not warrant the accuracy of the information

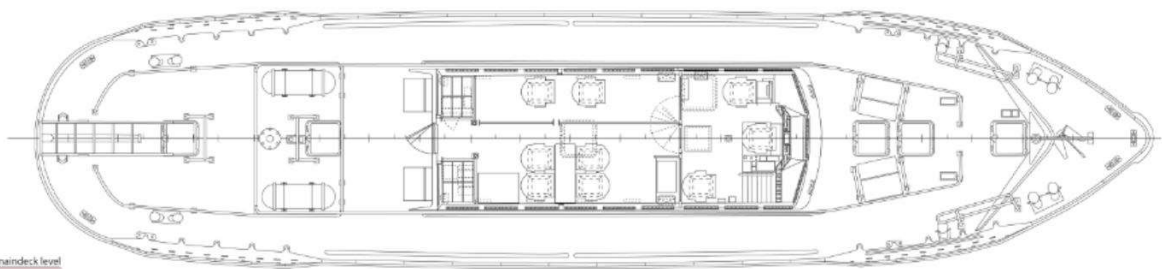
nor warrant the condition of the vessel or equipment.

Any buyer should instruct as suitably qualified person or organisation to inspect or investigate such details to the buyer's satisfaction.

All equipment is offered subject to availability, price change, or withdrawal from the market without notice.



## PILOT TENDER / SURVEY VESSEL (2 SISTERS)



### Disclaimer

All details of the vessels or equipment offered by FPS Marine is done in good faith but is not guaranteed. We do not warrant the accuracy of the information

nor warrant the condition of the vessel or equipment.

Any buyer should instruct as suitably qualified person or organisation to inspect or investigate such details to the buyer's satisfaction.

All equipment is offered subject to availability, price change, or withdrawal from the market without notice.